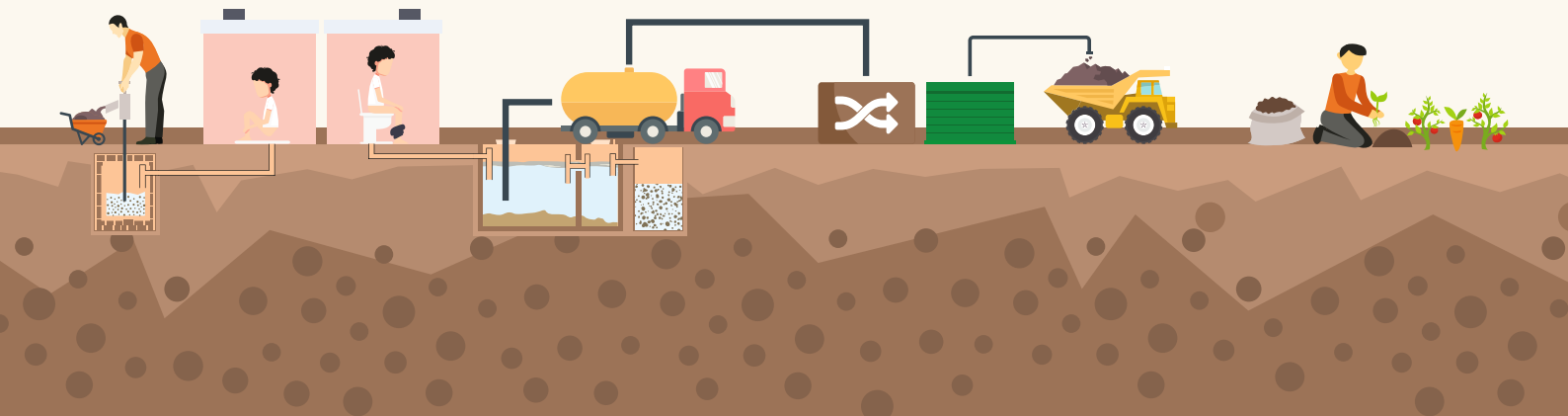


Rapid Planner QUESTIONNAIRE



CONTENTS

Module Description	01
Detailed Questionnaire	02

Module Description

The infrastructure planning toolkit assists users estimate infrastructure gaps and identify responses for improvement across all stages of the FSM service chain – containment, emptying, transportation and treatment. There is a total of 11 areas where the tool offers assistance. The tool allows for modular selection, where the user may choose one or more areas of support.

Rapid Planner – Topics

- RP1 Household Toilet Construction
- RP2 Community Toilet Construction
- RP3 Public toilet construction
- RP4 Toilet Interface Selection
- RP5 OSS Tech selection
- RP6 Total FS generation
- RP7 Vehicle procurement
- RP8 Treatment plant size
- RP9 Treatment site location
- RP10 Treatment tech identification
- RP11 Regional Treatment Infra

The following section has identified questions that are required for taking infrastructure planning decisions in the toolbox platform.

Detailed Questionnaire

#	Category	Questions	Options	Hint	Data Collection Protocol	RP	RP	RP	RP	RP	RP	RP	RP	RP	RP	RP
						1	2	3	4	5	6	7	8	9	10	11
1	Basic Information	Name of the organization				Y	Y	Y	Y	Y	Y	Y	Y	Y	Y	Y
2	Basic Information	Name of the person entering the data				Y	Y	Y	Y	Y	Y	Y	Y	Y	Y	Y
3	Basic Information	Designation				Y	Y	Y	Y	Y	Y	Y	Y	Y	Y	Y
4	Basic Information	Country				Y	Y	Y	Y	Y	Y	Y	Y	Y	Y	Y
5	Basic Information	Province or state				Y	Y	Y	Y	Y	Y	Y	Y	Y	Y	Y
6	Basic Information	Name of the urban area				Y	Y	Y	Y	Y	Y	Y	Y	Y	Y	Y
7	Basic Information	Population of the city			1. Kindly refer to the city census (population and housing) document. 2. You can also find this data on the city website.	Y	Y	Y	Y	Y	Y	Y	Y	Y	Y	Y
8	Basic Information	Ratio of men to women in the city			Kindly refer to the city census document.	Y	Y	Y	Y	Y	Y	Y	Y	Y	Y	Y
9	Basic Information	Total number of households in the city			1. Kindly refer to the city census document to identify the average household size in the city. 2. Divide the total population by the average household size to identify the total number of households in the city.	Y	Y	Y	Y	Y	Y	Y	Y	Y	Y	Y
10	Households	Total households in the city without toilet facility			1. Kindly refer to the household toilet characteristics section of the city census document for identifying the number of households having access to toilets in the city. Then subtract number of households having access to toilets from the total number of households in the city. 2. If data not found from secondary sources, then kindly approach the city	Y	Y									

#	Category	Questions	Options	Hint	Data Collection Protocol	RP 1	RP 2	RP 3	RP 4	RP 5	RP 6	RP 7	RP 8	RP 9	RP 10	RP 11
					engineer or planner to find out the total number of households without toilet facility											
11	Households	Total households in the city with dry toilet facility		A dry toilet is a toilet that operates without flush water, unlike a flush toilet or a pour flush toilet	Kindly refer to any baseline done either by the urban local body or any local or international organizations working in the sanitation space, particularly towards provision of dry toilets in the city	Y										
12	Households	Total households in the city with pit type onsite sanitation systems and with space constraint to construct another pit at the household level			1. Kindly refer to the household toilet characteristics section of the city census document for identifying the number of households using pit latrines as a containment unit. Please note that this information may only be provided if the census has information on containment. 2. If data is not available in secondary sources, then kindly approach the city engineer or planner to get the total number of pit latrines in the city. 3. With respect to the households which do not have space to construct a new pit latrines, kindly check with the urban local body (and city development authority for the data. If secondary data is not available on this then a primary survey should be conducted.	Y										
13	Households	Total households in the city not having a toilet due to space constraint			1. Kindly refer to the household toilet characteristics section of the city census document for identifying the number of households having access to toilets in the city. Then subtract number of households having access to toilets from the total	Y										

#	Category	Questions	Options	Hint	Data Collection Protocol	RP 1	RP 2	RP 3	RP 4	RP 5	RP 6	RP 7	RP 8	RP 9	RP 10	RP 11
					number of households in the city. 2. If data not found from secondary sources, then kindly approach the city engineer or planner to find out the total number of households without toilet facility											
14	Households	Total Households in the city without toilet facility due to space constraint and without access to community toilet facility in the neighborhood		Community toilets here means a shared facility provided by and for a group of residents or an entire settlement. Community toilet blocks are used primarily in low-income and/or informal settlements and/or slums, where space and/or land is a constraint in providing a household toilet. These are for a fixed user group.	1. Kindly refer to the previous question to identify the number of households not having access to toilets due to lack of space. 2. You should check with the urban local body or the city development authority to determine if these households have access to community toilets. 3. If data is not available on households having space constraint for toilet construction and no access to community toilets, then a primary survey should be conducted.		Y									
15	Assumptions	1 male community toilet seat is required for every _____ men					Y									
16	Assumptions	1 female community toilet seat is required for every _____ women					Y									
17	Public Toilets	What is the total floating			1. Kindly refer to the city specific floating population census			Y								

#	Category	Questions	Options	Hint	Data Collection Protocol	RP 1	RP 2	RP 3	RP 4	RP 5	RP 6	RP 7	RP 8	RP 9	RP 10	RP 11
		population in the city?			document. 2. You may also get this data from the city planner or the city engineer											
18	Public Toilets	Ratio of men to women in the floating areas of the city			1. Kindly refer to the city specific floating population census document. 2. You may also get this data from the city planner or the city engineer			Y								
19	Public Toilets	No. of public toilet seats available (in usable condition) for men in the city		By public toilets, it is implied that these are to be provided for the floating population /general public in places such as markets, train stations, tourist places, near office complexes , or other public areas where there are considerable number of people passing by.	1. Kindly refer to the city's conservancy and sanitation department documents for identifying the number of public toilet seats for men in the city 2. If data is not available in the city documents, then kindly approach the city planner or engineer to get the information.			Y								
20	Public Toilets	No. of public toilet seats available (in usable condition) for women in the city		By public toilets, it is implied that these are to be provided for the floating population /general public in places such as markets, train stations, tourist places, near office complexes , or other public areas where there are considera	1. Kindly refer to the city's conservancy and sanitation department documents for identifying the number of public toilet seats for women in the city 2. If data is not available in the city documents, then kindly approach the city planner or engineer to get the information.			Y								

#	Category	Questions	Options	Hint	Data Collection Protocol	RP 1	RP 2	RP 3	RP 4	RP 5	RP 6	RP 7	RP 8	RP 9	RP 10	RP 11
				ble number of people passing by.												
21	Assumptions	1 public toilet seat is required for every _____ men						Y								
22	Assumptions	1 public toilet seat is required for every _____ women						Y								
23	Toilet Interface	What is the water availability for toilet usage?	<ul style="list-style-type: none"> - Water unavailable for toilet usage - 1 small bucket of water per use (5L per use) - 1 medium bucket of water per use (5-10L per use) - 1 large bucket of water per use (10-15L per use) 		<p>1. Kindly refer to the city water supply and sewerage department documents to know the toilet water requirements of the city and identify the amount of water supplied per day. Also note, whether this water is supplied to the entire city or only to certain areas of the city. This would help you identify the amount of water available for toilet usage.</p> <p>2. You can also get this information by talking to the chief engineer of the water supply department</p>				Y							
24	Toilet Interface	What is the potential water sourcing method?	<ul style="list-style-type: none"> - Piped water connection supplied through overhead tank (or) - Other methods (fetched, hand pump, standpipe, open tank at floor level) 		Kindly refer to the documents published by the water supply and sewerage department in the city or by talking to the chief engineer of the department				Y							
25	Toilet Interface	What are the end use possibilities of sanitation	-Human urine as fertilizers for crops		1. Kindly refer to sanitation related documents published by local or				Y							

#	Category	Questions	Options	Hint	Data Collection Protocol	RP 1	RP 2	RP 3	RP 4	RP 5	RP 6	RP 7	RP 8	RP 9	RP 10	RP 11
		products in the city/neighborhood?	(or) - Dried human feces as fertilizer for crops (or) - None		international organizations (urban local bodies, NGOs, donor agencies, etc.) which focuses on the reuse scenario of faecal sludge in the city. 2. If data is not available in the secondary documents, then kindly approach the chief engineer of the city.											
26	Toilet Interface	Are the users comfortable about using two different compartments in the toilet user interface regularly?	Yes No	Here two different compartments refers to one for disposal of urine and the other for faecal sludge disposal	Key informant interviews with research agencies and NGOs working in the sanitation space locally might help provide guidance on this.				Y	Y						
27	Toilet Interface	What is the preferred anal cleansing method?	Water Soft paper others		Key informant interviews with research agencies and NGOs working in the sanitation space locally may provide guidance on this.				Y							
28	OSS Selection	Is the location flood prone?	- Non-flood prone area - Flood prone area		1. Kindly refer to secondary documents specifying the topography of the area. 2. You can alternatively ask the city municipal planner or the city engineer.					Y						
29	OSS Selection	At what depth is the ground water available?	- Less than 2m - 2m to 5m - greater than 5m		1. Kindly refer to the documents published by the water supply and sewerage department in the city or by talking to the chief engineer of the department. 2. You can also get this information from the city documents or website or by talking to the city engineer.					Y						
30	OSS Selection	What is the % of slope?	- Less than 5% - 5% to 25%	If the area is a hilly area, then the area will have slope	1. Kindly refer to the secondary documents specifying the topography details of the area.					Y						

#	Category	Questions	Options	Hint	Data Collection Protocol	RP 1	RP 2	RP 3	RP 4	RP 5	RP 6	RP 7	RP 8	RP 9	RP 10	RP 11
			- greater than 25%	greater than 5%. Similarly if the area is a flat plain then the area will have a slope of less than 5%.	2. You can also get this information from the city documents or website or by talking to the city engineer 3. You may also find this information while speaking to a few locals in the city.											
31	OSS Selection	What is the vehicular accessibility?	- No access (less than 3m) - limited / narrow (3m - 6m) - Full access (greater than 6m)	Here vehicular accessibility refers to the road width. Please note that the average accessibility for the area would be assessed taking into consideration the accessible and the inaccessible areas.	1. Kindly refer to urban planning documents either published by local or international organizations or refer to the master development plan report for the city. 2. Alternatively you can also talk to the city urban planner or someone from the transport department to get an idea about the road width in the city					Y						
32	OSS Selection	What is the soil type?	- clayey - silty - sandy - gravelly - rocky		Kindly refer to the documents published by the geological survey department to identify the soil type in the city or perform a soil test.					Y						
33	OSS Selection	What is the willingness to pay for maintenance of the system?	- High - Moderate - Low		Kindly refer to the secondary documents on current tariff structure for sanitation services, their affordability and willingness to pay for improved sanitation services. If this data is not available in secondary documents, it is suggested to conduct a primary survey to understand the preference of users.					Y						
34	OSS Selection	Are the toilet users comfortable about using two different compartments for disposal of urine and	Yes No							Y						

#	Category	Questions	Options	Hint	Data Collection Protocol	RP 1	RP 2	RP 3	RP 4	RP 5	RP 6	RP 7	RP 8	RP 9	RP 10	RP 11
		faecal sludge at the facility regularly?														
35	Households	Identify the total number of households dependent on each of the following OSS typology?	-Septic tank - Pit - Fully lined tank		Kindly refer to 'household toilet characteristics' section of the city Census document to help identify the types of on-site sanitation systems connected to different types of toilets in the city.						Y					Y
36	Commercial / Institutional / Industrial	Identify the total number of buildings (commercial, institutional and industrial) dependent on each of the following on-site sanitation system typology.	-Septic tank - Pit - Fully lined tank		Kindly refer to 'household toilet characteristics' section of the city census document to help identify the types of on-site sanitation systems connected to different types of toilets in the city.						Y					Y
37	Commercial / Institutional / Industrial	On an average, how many people make use of the toilet facility available within buildings for defecation purpose only?	-Septic tank - Pit - Fully lined tank		Kindly refer to 'household toilet characteristics' section of the city census document to help identify the types of on-site sanitation systems connected to different types of toilets in the city.						Y					Y
38	Community Toilets	Identify the total number of community toilets dependent on each of the following on-site sanitation system typology.	-Septic tank - Pit - Fully lined tank		1. Kindly refer to the city website or the city documents (particularly the conservancy and sanitation department documents) to identify the total number of community toilets in the city. 2. If the data is not mentioned in the city documents, kindly refer to secondary documents of local and international agencies (public organizations, funding agencies and non-governmental organizations) who work towards providing community toilets in the city.						Y					Y

#	Category	Questions	Options	Hint	Data Collection Protocol	RP 1	RP 2	RP 3	RP 4	RP 5	RP 6	RP 7	RP 8	RP 9	RP 10	RP 11	
39	Community Toilets	In total, how many households are dependent on these community toilet?	-Septic tank - Pit - Fully lined tank		1. Kindly refer to the city website or the city documents (particularly the conservancy and sanitation department documents) to identify the total number of community toilets in the city. 2. If the data is not mentioned in the city documents, kindly refer to secondary documents of local and international agencies (public organizations, funding agencies and non-governmental organizations) who work towards providing community toilets in the city.						Y						Y
40	Public Toilets	Identify the total number of public toilets dependent on each of the following on-site sanitation system typology.	-Septic tank - Pit - Fully lined tank		Kindly refer to the city website or city documents (particularly the conservancy and sanitation department documents) to identify the total number of public toilets in the city.						Y						Y
41	Public Toilets	On an average, how many people make use of the public toilet facility for defecation purpose only?	-Septic tank - Pit - Fully lined tank		Kindly refer to the city website or the city documents (particularly the conservancy and sanitation department documents) or talk to the city engineer to identify the total number of people using public toilets for defecating purpose only.						Y						Y
42	Assumptions	What is the average generation rate per person per day for each of the on-site sanitation system typology shown below?	-Septic tank - Pit - Fully lined tank		Engage with sanitation consultants to understand latest research in your country.						Y						Y
43	Households	Identify the total number of households located on	-Septic tank - Pit - Fully		1. Kindly refer to 'household toilet characteristics' section of the city							Y	Y				

#	Category	Questions	Options	Hint	Data Collection Protocol	RP 1	RP 2	RP 3	RP 4	RP 5	RP 6	RP 7	RP 8	RP 9	RP 10	RP 11
		roads with poor access (width of the road less than 3m) dependent on each of the following on-site sanitation system typology.	lined tank		census document to help identify the types of on-site sanitation systems connected to different types of toilets in the city. Please note that this information may only be provided in the census if it classifies on site sanitation systems as per the different toilet types. 2. Kindly refer to the sanitation baseline study conducted by any local or international organizations (urban local body, educational institutes, non-governmental organizations) in the city.											
44	Commercial / Institutional / Industrial	Identify the total number of buildings (commercial, institutional and industrial) located on roads with poor access (width of the road less than 3m) dependent on each of the following on-site sanitation system typology.	-Septic tank - Pit - Fully lined tank		1. Kindly refer to 'household toilet characteristics' section of the city census document to help identify the types of on-site sanitation systems connected to different types of toilets in the city. Please note that this information may only be provided in the census if it classifies on site sanitation systems as per the different toilet types. 2. Kindly refer to the sanitation baseline study conducted by any local or international organizations (urban local body, educational institutes, non-governmental organizations) in the city.							Y	Y			
45	Commercial / Institutional / Industrial	On an average, how many people make use of the toilet facility available within buildings located on roads with	-Septic tank - Pit - Fully lined tank		1. Kindly refer to 'household toilet characteristics' section of the city census document to help identify the types of on-site sanitation systems connected to different types of toilets in the city.							Y	Y			

#	Category	Questions	Options	Hint	Data Collection Protocol	RP 1	RP 2	RP 3	RP 4	RP 5	RP 6	RP 7	RP 8	RP 9	RP 10	RP 11
		poor access (width of the road less than 3m) for defecation purpose only? (disaggregated by OSS typology)			Please note that this information may only be provided in the census if it classifies on site sanitation systems as per the different toilet types. 2. Kindly refer to the sanitation baseline study conducted by any local or international organizations (urban local body, educational institutes, non-governmental organizations) in the city.											
46	Community Toilets	Identify the total number of community toilets located on roads with poor access (width of the road less than 3m) dependent on each of the following on-site sanitation system typology.	-Septic tank - Pit - Fully lined tank	Community toilets here means a shared facility provided by and for a group of residents or an entire settlement. Community toilet blocks are used primarily in low-income and/or informal settlements and/or slums, where space and/or land is a constraint in providing a household toilet. These are for a fixed user group.	1. Kindly refer to the city website or city documents (particularly the conservancy and sanitation department documents) to identify the total number of community toilets in the city. 2. If the data is not mentioned in the city documents, kindly refer to secondary documents of local and international agencies (public organizations, funding agencies and non-governmental organizations) who work towards providing community toilets in the city. 3. You may also refer to the sanitation baseline study conducted by any local or international organizations (urban local body, educational institutes, non-governmental organizations) in the city.							Y	Y			
47	Community Toilets	In total, how many households are dependent on these community toilets located on roads with poor access (width of the	-Septic tank - Pit - Fully lined tank	Community toilets here means a shared facility provided by and for a group of residents	Kindly refer to the city website or the city documents (particularly the conservancy and sanitation department documents) or talk to the city engineer to identify the total							Y	Y			

#	Category	Questions	Options	Hint	Data Collection Protocol	RP 1	RP 2	RP 3	RP 4	RP 5	RP 6	RP 7	RP 8	RP 9	RP 10	RP 11
		road less than 3m)? (disaggregated by OSS typology)		or an entire settlement . Community toilet blocks are used primarily in low-income and/or informal settlements and/or slums, where space and/or land is a constraint in providing a household toilet. These are for a fixed user group.	number of people using public toilets for defecating purpose only.											
48	Public Toilets	Identify the total number of public toilets located on roads with poor access (width of the road less than 3m) dependent on each of the following on-site sanitation system typology.	-Septic tank - Pit - Fully lined tank	Public toilets here is defined as those that are used by the floating population /general public in places such as markets, train stations, tourist places, near office complexes , or other public areas where there are considerable number of people passing by.	Kindly refer to the city website or city documents (particularly the conservancy and sanitation department documents) to identify the total number of public toilets in the city.							Y	Y			
49	Public Toilets	On an average, how many people make use of the public toilet facility located on roads with poor access (width of the	-Septic tank - Pit - Fully lined tank									Y	Y			

#	Category	Questions	Options	Hint	Data Collection Protocol	RP 1	RP 2	RP 3	RP 4	RP 5	RP 6	RP 7	RP 8	RP 9	RP 10	RP 11
		road less than 3m) for defecation purpose only? (disaggregated by OSS typology)														
50	Households	Identify the total number of households located on roads with good access (width of the road greater than 3m) dependent on each of the following on-site sanitation system typology?	-Septic tank - Pit - Fully lined tank		Kindly refer to 'household toilet characteristics' section of the city census document to help identify the types of on-site sanitation systems connected to different types of toilets in the city.							Y	Y			
51	Commercial / Institutional / Industrial	Identify the total number of buildings (commercial, institutional and industrial) located on roads with good access (width of the road greater than 3m) dependent on each of the following on-site sanitation system typology?	-Septic tank - Pit - Fully lined tank		Kindly refer to 'household toilet characteristics' section of the city census document to help identify the types of on-site sanitation systems connected to different types of toilets in the city.							Y	Y			
52	Commercial / Institutional / Industrial	On an average, how many people make use of the toilet facility located on roads with good access (width of the road greater than 3m) available within these buildings for defecation purpose only? (disaggregated by on-site sanitation system typology)	-Septic tank - Pit - Fully lined tank		Kindly refer to 'household toilet characteristics' section of the city census document to help identify the types of on-site sanitation systems connected to different types of toilets in the city.							Y	Y			
53	Community Toilets	Identify the total number of community toilets located on roads with	-Septic tank - Pit - Fully	Community toilets here means a shared	Kindly refer to the city website or city documents (particularly the conservancy and							Y	Y			

#	Category	Questions	Options	Hint	Data Collection Protocol	RP 1	RP 2	RP 3	RP 4	RP 5	RP 6	RP 7	RP 8	RP 9	RP 10	RP 11
		good access (width of the road greater than 3m) dependent on each of the following on-site sanitation system typology?	lined tank	facility provided by and for a group of residents or an entire settlement . Community toilet blocks are used primarily in low-income and/or informal settlements and/or slums, where space and/or land is a constraint in providing a household toilet. These are for a fixed user group.	sanitation department documents) to identify the total number of community toilets in the city.											
54	Community Toilets	In total, how many households are dependent on these community toilets located on roads with good access (width of the road greater than 3m) ? (disaggregated by on-site sanitation system typology)	-Septic tank - Pit - Fully lined tank									Y	Y			
55	Public Toilets	Identify the total number of public toilets located on roads with good access (width of the road greater than 3m) dependent on each of the following on-site sanitation system typology?	-Septic tank - Pit - Fully lined tank	Public toilets here is defined as those that are used by the floating population /general public in places such as markets, train stations, tourist places,	Kindly refer to the city website or city documents (particularly the conservancy and sanitation department documents) to identify the total number of public toilets in the city.							Y	Y			

#	Category	Questions	Options	Hint	Data Collection Protocol	RP 1	RP 2	RP 3	RP 4	RP 5	RP 6	RP 7	RP 8	RP 9	RP 10	RP 11
				near office complexes , or other public areas where there are considerable number of people passing by.												
56	Public Toilets	On an average, how many people make use of the public toilet facility located on roads with good access (width of the road greater than 3m) for defecation purpose only? (disaggregated by on-site sanitation system typology)	-Septic tank - Pit - Fully lined tank		Kindly refer to the city website or the city documents (particularly the conservancy and sanitation department documents) or talk to the city engineer to identify the total number of people using public toilets for defecating purpose only.							Y	Y			
57	Desludging Operators	What is the total number of trips per day made by small desludging vehicles in the city?			Please conduct key informant interviews with desludging operators.							Y	Y			
58	Desludging Operators	What is the average volume of a small desludging vehicles in the city?			Please conduct key informant interviews with desludging operators.							Y	Y			
59	Desludging Operators	What is the total number of small desludging vehicles available in the city?			Please conduct key informant interviews with desludging operators.							Y	Y			
60	Desludging Operators	What is the average desludging frequency of small desludging vehicles in the city? (In years)			Please conduct key informant interviews with desludging operators.							Y	Y			
61	Desludging Operators	What is the total number of trips per day made by Large			Please conduct key informant interviews with desludging operators.							Y	Y			

#	Category	Questions	Options	Hint	Data Collection Protocol	RP 1	RP 2	RP 3	RP 4	RP 5	RP 6	RP 7	RP 8	RP 9	RP 10	RP 11
		desludging vehicles in the city?														
62	Desludging Operators	What is the average volume of large desludging vehicles in the city?			Please conduct key informant interviews with desludging operators.							Y	Y			
63	Desludging Operators	What is the total number of large desludging vehicles available in the city?			Please conduct key informant interviews with desludging operators.							Y	Y			
64	Desludging Operators	What is the average desludging frequency of large desludging vehicles in the city?			Please conduct key informant interviews with desludging operators.							Y	Y			
65	Assumptions	Percentage of water content required in the onsite sanitation systems to desludge the faecal sludge generated from the system?			Please consult with the desludging operators to understand the water content concentration required for effective desludging of faecal sludge in the city.							Y	Y			
66	Basic Information	What is the projected population of the city in 10 years?			Use these values in simple online calculators such as http://www.metamorpha.com/ias/population.php for arriving at simple population projection for the city. Please note that the above calculation methodology is a simple calculation method only.								Y			
67	Treatment	Is there any habitation in less than 200m distance from the identified site?	Yes No		1. Kindly review the land use map for the city to identify the presence of any habitation within 200 meters radius of the identified site for treatment plant. 2. If a land use map is not available, then either talk to the city engineer to identify the presence of any nearby habitation or									Y		

#	Category	Questions	Options	Hint	Data Collection Protocol	RP 1	RP 2	RP 3	RP 4	RP 5	RP 6	RP 7	RP 8	RP 9	RP 10	RP 11
					undertake site visits to check for any nearby habitation.											
68	Treatment	Are there any water bodies in less than 200m distance from the identified site?	Yes No		<p>1. Kindly review the land use map for the city to identify the presence of any waterbody within 200 meters radius of the identified site for treatment plant.</p> <p>2. If a land use map is not available, then either talk to the city engineer to identify the presence of any nearby water body or undertake site visits to check for any nearby water bodies.</p>									Y		
69	Treatment	Is the identified site a wetland?	Yes No		<p>1. Kindly review the land use map for the city to identify the presence of wetland in the identified site for treatment plant.</p> <p>2. If a land use map is not available, then either talk to the city engineer to identify the presence of any wetland or undertake a site visit.</p>									Y		
70	Treatment	Is the identified site in a flood prone area?	Yes No		<p>1. Kindly review the land use map for the city to identify the presence of water bodies in the proximity to the identified site.</p> <p>2. If a land use map is not available, then either talk to the city engineer to identify the possibility of flooding in the identified site.</p>									Y		
71	Treatment	Is there an airport site (current / proposed) in less than 20Km distance from the identified site?	Yes No		<p>1. Kindly review the land use map for the city to identify the presence of airports nearby the identified site for treatment plant.</p> <p>2. If a land use map is not available, then either talk to the municipal city engineer or officials from city development authority to identify the presence of airports.</p>									Y		

#	Category	Questions	Options	Hint	Data Collection Protocol	RP 1	RP 2	RP 3	RP 4	RP 5	RP 6	RP 7	RP 8	RP 9	RP 10	RP 11
72	Treatment	Is there a heritage site in less than 10Km distance from the identified site?	Yes No		1. Kindly review the land use map for the city to identify the proximity to heritage sites nearby the identified site for treatment plant. 2. If a land use map is not available, then either talk to the municipal city engineer or officials from city development authority to identify the presence of heritage sites in the neighborhood of identified treatment site.									Y		
73	Treatment	Is the groundwater table available in less than 3m distance from the ground?	Yes No											Y		
74	Treatment	Is there a drainage channel available next to the identified site?	Yes No		1. Kindly refer to the documents published by the water supply and sewerage department in the city or by talking to the chief engineer of the department. 2. You can also get this information from the city documents or website or by talking to the city engineer.									Y		
75	Treatment	Is the site flood prone?	- Non-flood prone area - Flood prone area												Y	
76	Treatment	At what depth is the ground water available in the site?	- Less than 3m - 3m to 5m - greater than 5m		1. Kindly refer to the documents of the water supply and sewerage department in the city or approach the chief engineer of the department. 2. You can also get this information from the city documents or website or by approaching your city engineer.										Y	

#	Category	Questions	Options	Hint	Data Collection Protocol	RP 1	RP 2	RP 3	RP 4	RP 5	RP 6	RP 7	RP 8	RP 9	RP 10	RP 11	
77	Treatment	What is the % of slope at the site?	<ul style="list-style-type: none"> - Less than 5% - 5% to 25% - greater than 25% 	<p>If the area is a hilly area, then the area will have slope greater than 5%. Similarly if the area is a flat plain then the area will have a slope of less than 5%.</p>	<p>1. Kindly refer to the secondary documents specifying the topography details of the area.</p> <p>2. You can also get this information from the city documents or website by approaching your city engineer.</p>											Y	
78	Treatment	What is the soil type at the site?	<ul style="list-style-type: none"> - clayey - silty - sandy - gravelly - rocky 		<p>1. Kindly refer to the documents published by the geological survey department to identify the soil type at the site.</p> <p>2. If secondary data is not available, then you need to conduct a soil profile test to identify the soil type at the site.</p>												Y
79	Treatment	What are the end use possibilities in the city / neighbourhood?	<ul style="list-style-type: none"> - Human urine as fertilizers for crops (or) - Dried human feces as fertilizer for crops (or) - None 		Please consult with the chief engineer of the city.												Y
80	Treatment	What is the operational capacity/preference of the user for maintenance of the system?	<ul style="list-style-type: none"> - High - Moderate - Low 		Kindly approach the city municipal officials or development authority officials to understand their perspective on the operations and maintenance requirement of the treatment plant.												Y
81	Treatment	What is the level of dependency on availability of electricity for operation of the system?	<ul style="list-style-type: none"> - High - Moderate - Low 		Kindly approach the city municipal officials or development authority officials to understand their perspective on the electricity requirements for operations and maintenance of the treatment plant.												Y

#	Category	Questions	Options	Hint	Data Collection Protocol	RP 1	RP 2	RP 3	RP 4	RP 5	RP 6	RP 7	RP 8	RP 9	RP 10	RP 11	
82	Treatment	Is there any treatment location in the neighbourhood within Xkm from the city? (x will be filled based on the user country's benchmark table)	Yes No		1. Kindly refer to the land use map for that particular neighborhood to identify the presence of any treatment plant within the given distance. 2. If data is not received from the land use map, ask your city municipal engineer about the presence of a treatment plant within the specified distance.												Y
83										Y							
84	Treatment	What is the total treatment capacity of the treatment plant?			Kindly ask your city municipal engineer about the plant details. If the treatment plant was constructed by a private organization, approach the chief engineer of the private organization to obtain this information.												Y
85	Treatment	What is the current utilization capacity of the treatment plant?			Kindly ask your city municipal engineer about the plant details. If the treatment plant was constructed by a private organization, approach the chief engineer of the private organization to obtain this information.												Y
86	Community Toilets	What is the total number of community toilets seats available for male in the city in usable condition?			1. Kindly refer to the city website or the city documents (particularly the conservancy and sanitation department documents) to identify the total number of community toilets in the city. 2. If the data is not mentioned in the city documents, kindly refer to secondary documents of local and international agencies (public organizations, funding agencies and non-governmental organizations) who work towards providing		Y										

#	Category	Questions	Options	Hint	Data Collection Protocol	RP 1	RP 2	RP 3	RP 4	RP 5	RP 6	RP 7	RP 8	RP 9	RP 10	RP 11
					community toilets in the city.											
87	Community Toilets	What is the total number of community toilets seats available for female in the city in usable condition?			<p>1. Kindly refer to the city website or the city documents (particularly the conservancy and sanitation department documents) to identify the total number of community toilets in the city.</p> <p>2. If the data is not mentioned in the city documents, kindly refer to secondary documents of local and international agencies (public organizations, funding agencies and non-governmental organizations) who work towards providing community toilets in the city.</p>		Y									