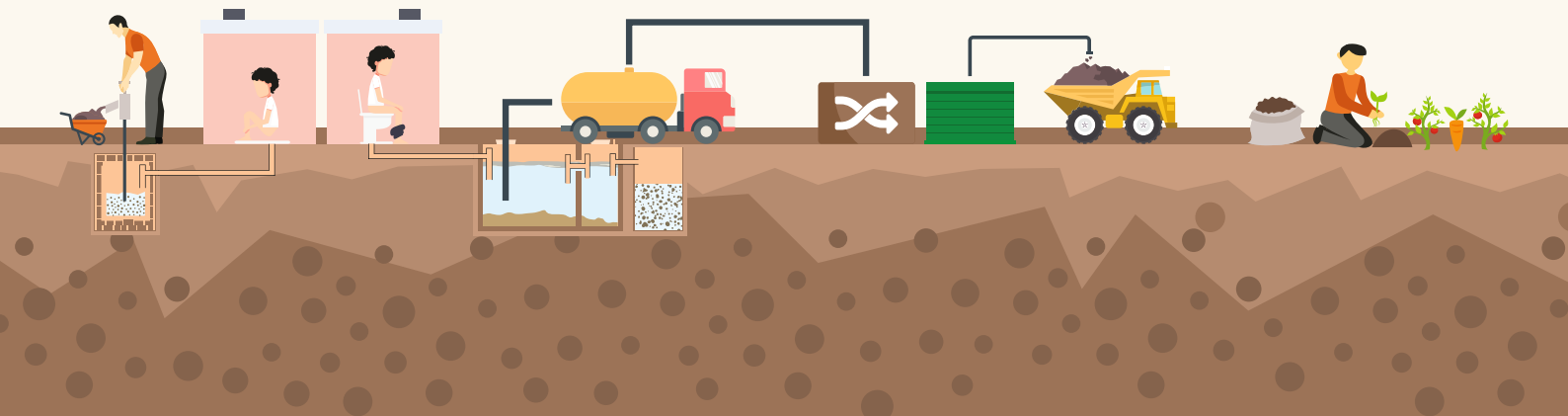


Rapid Planner QUESTIONNAIRE



CONTENTS

Module Description	01
Detailed Questionnaire	02

Module Description

The infrastructure planning toolkit assists users estimate infrastructure gaps and identify responses for improvement across all stages of the FSM service chain – containment, emptying, transportation and treatment. There is a total of 11 areas where the tool offers assistance. The tool allows for modular selection, where the user may choose one or more areas of support.

Rapid Planner – Topics

- RP1 Household Toilet Construction
- RP2 Community Toilet Construction
- RP3 Public toilet construction
- RP4 Toilet Interface Selection
- RP5 OSS Tech selection
- RP6 Total FS generation
- RP7 Vehicle procurement
- RP8 Treatment plant size
- RP9 Treatment site location
- RP10 Treatment tech identification
- RP11 Regional Treatment Infra

The following section has identified questions that are required for taking infrastructure planning decisions in the toolbox platform.

#	Category	Questions	Options	Hint	Data Collection Protocol	RP	RP	RP	RP	RP	RP	RP	RP	RP	RP	RP
						1	2	3	4	5	6	7	8	9	10	11
22	Assumptions	1 public toilet seat is required for every ----- women						Y								
23	Toilet Interface	What is the water availability for toilet usage?	<ul style="list-style-type: none"> - Water unavailable for toilet usage - 1 small bucket of water per use (5L per use) - 1 medium bucket of water per use (5-10L per use) - 1 large bucket of water per use (10-15L per use) 		<p>1. Kindly refer to the city water supply and sewerage department documents to know the toilet water requirements of the city and identify the amount of water supplied per day. Also note, whether this water is supplied to the entire city or only to certain areas of the city. This would help you identify the amount of water available for toilet usage.</p> <p>2. You can also get this information by talking to the chief engineer of the water supply department</p>				Y							
24	Toilet Interface	What is the potential water sourcing method?	<ul style="list-style-type: none"> - Piped water connection supplied through overhead tank (or) - Other methods (fetched, hand pump, standpipe, open tank at floor level) 		Kindly refer to the documents published by the water supply and sewerage department in the city or by talking to the chief engineer of the department				Y							

#	Category	Questions	Options	Hint	Data Collection Protocol	RP	RP	RP	RP	RP	RP	RP	RP	RP	RP	RP
						1	2	3	4	5	6	7	8	9	10	11
25	Toilet Interface	What are the end use possibilities of sanitation products in the city/neighborhood?	- Human urine as fertilizers for crops (or) - Dried human feces as fertilizer for crops (or) - None		1. Kindly refer to sanitation related documents published by local or international organizations (urban local bodies, NGOs, donor agencies, etc.) which focuses on the reuse scenario of faecal sludge in the city. 2. If data is not available in the secondary documents, then kindly approach the chief engineer of the city.				Y							
26	Toilet Interface	Are the users comfortable about using two different compartments in the toilet user interface regularly?	Yes No	Here two different compartments refers to one for disposal of urine and the other for faecal sludge disposal	Key informant interviews with research agencies and NGOs working in the sanitation space locally might help provide guidance on this.				Y	Y						
27	Toilet Interface	What is the preferred anal cleansing method?	Water Soft paper others		Key informant interviews with research agencies and NGOs working in the sanitation space locally might help provide guidance on this.				Y							
28	OSS Selection	Is the location flood prone?	- Non-flood prone area - Flood prone area		1. Kindly refer to secondary documents specifying the topography of the area. 2. Also you can alternatively ask the city municipal planner or the city engineer.					Y						
29	OSS Selection	At what depth is the ground water available?	- Less than 2m - 2m to 5m - greater than 5m		1. Kindly refer the documents published by the water supply and sewerage department in					Y						

#	Category	Questions	Options	Hint	Data Collection Protocol	RP 1	RP 2	RP 3	RP 4	RP 5	RP 6	RP 7	RP 8	RP 9	RP 10	RP 11
					<p>the city or by talking to the chief engineer of the department</p> <p>2. You can also get this information from the city documents or website or by talking to the city engineer</p>											
30	OSS Selection	What is the % of slope?	<ul style="list-style-type: none"> - Less than 5% - 5% to 25% - greater than 25% 	If the area is a hilly area, then the area will have slope greater than 5%. Similarly if the area is a flat plain then the area will have a slope of less than 5%.	<p>1. Kindly refer to the secondary documents specifying the topography details of the area.</p> <p>2. You can also get this information from the city documents or website or by talking to the city engineer</p> <p>3. You may also find this information while speaking to a few locals in the city.</p>					Y						
31	OSS Selection	What is the vehicular accessibility?	<ul style="list-style-type: none"> - No access (less than 3m) - limited / narrow (3m - 6m) - Full access (greater than 6m) 	Here vehicular accessibility refers to the road width. Please note that the average accessibility for the area would be assessed taking into consideration the accessible and the inaccessible areas.	<p>1. Kindly refer to urban planning documents either published by local or international organizations or refer to the master development plan report for the city.</p> <p>2. Alternatively you can also talk to the city urban planner or someone from the transport department to get an idea about the road width in the city</p>					Y						

#	Category	Questions	Options	Hint	Data Collection Protocol	RP	RP	RP	RP	RP	RP	RP	RP	RP	RP	RP	
						1	2	3	4	5	6	7	8	9	10	11	
32	OSS Selection	What is the soil type?	<ul style="list-style-type: none"> - clayey - silty - sandy - gravelly - rocky 		Kindly refer to the documents published by the geological survey department to identify the soil type in the city or perform a soil test.						Y						
33	OSS Selection	What is the willingness to pay for maintenance of the system?	<ul style="list-style-type: none"> - High - Moderate - Low 		Kindly refer to the secondary documents on current tariff structure for sanitation services, their affordability and willingness to pay for improved sanitation services. If this data is not available in secondary documents, it is suggested to conduct a primary survey to understand the preference of users.						Y						
34	OSS Selection	Are the toilet users comfortable about using two different compartments for disposal of urine and faecal sludge at the facility regularly?	<ul style="list-style-type: none"> Yes No 								Y						
35	Households	Identify the total number of households dependent on each of the following OSS typology?	<ul style="list-style-type: none"> -Septic tank - Pit - Fully lined tank 		Kindly refer to 'household toilet characteristics' section of the city Census document to help identify the types of on-site sanitation systems connected to different types of toilets in the city.						Y						Y

#	Category	Questions	Options	Hint	Data Collection Protocol	RP	RP	RP	RP	RP	RP	RP	RP	RP	RP	RP	
						1	2	3	4	5	6	7	8	9	10	11	
36	Commercial / Institutional / Industrial	Identify the total number of buildings (commercial, institutional and industrial) dependent on each of the following on-site sanitation system typology.	-Septic tank - Pit - Fully lined tank		Kindly refer to 'household toilet characteristics' section of the city Census document to help identify the types of on-site sanitation systems connected to different types of toilets in the city.						Y						Y
37	Commercial / Institutional / Industrial	On an average, how many people make use of the toilet facility available within buildings for defecation purpose only?	-Septic tank - Pit - Fully lined tank		Kindly refer to 'household toilet characteristics' section of the city Census document to help identify the types of on-site sanitation systems connected to different types of toilets in the city.						Y						Y

#	Category	Questions	Options	Hint	Data Collection Protocol	RP	RP	RP	RP	RP	RP	RP	RP	RP	RP	RP	
						1	2	3	4	5	6	7	8	9	10	11	
38	Community Toilets	Identify the total number of community toilets dependent on each of the following on-site sanitation system typology.	-Septic tank - Pit - Fully lined tank		1. Kindly refer to the city website or the city documents (particularly the conservancy and sanitation department documents) to identify the total number of community toilets in the city. 2. If the data is not mentioned in the city documents, kindly refer to secondary documents of local and international agencies (public organizations, funding agencies and non-governmental organizations) who work towards providing community toilets in the city.						Y						Y

#	Category	Questions	Options	Hint	Data Collection Protocol	RP	RP	RP	RP	RP	RP	RP	RP	RP	RP	RP	
						1	2	3	4	5	6	7	8	9	10	11	
39	Community Toilets	In total, how many households are dependent on these community toilet?	-Septic tank - Pit - Fully lined tank		1. Kindly refer to the city website or the city documents (particularly the conservancy and sanitation department documents) to identify the total number of community toilets in the city. 2. If the data is not mentioned in the city documents, kindly refer to secondary documents of local and international agencies (public organizations, funding agencies and non-governmental organizations) who work towards providing community toilets in the city.						Y						Y
40	Public Toilets	Identify the total number of public toilets dependent on each of the following on-site sanitation system typology.	-Septic tank - Pit - Fully lined tank		Kindly refer to the city website or the city documents (particularly the conservancy and sanitation department documents) to identify the total number of public toilets in the city.						Y						Y

#	Category	Questions	Options	Hint	Data Collection Protocol	RP	RP	RP	RP	RP	RP	RP	RP	RP	RP	RP		
						1	2	3	4	5	6	7	8	9	10	11		
41	Public Toilets	On an average, how many people make use of the public toilet facility for defecation purpose only?	-Septic tank - Pit - Fully lined tank		Kindly refer to the city website or the city documents (particularly the conservancy and sanitation department documents) or talk to the city engineer to identify the total number of people using public toilets for defecating purpose only.						Y						Y	
42	Assumptions	What is the average generation rate per person per day for each of the on-site sanitation system typology shown below?	-Septic tank - Pit - Fully lined tank		Engage with sanitation consultants to understand latest research in your country.						Y							Y
43	Households	Identify the total number of households located on roads with poor access (width of the road less than 3m) dependent on each of the following on-site sanitation system typology.	-Septic tank - Pit - Fully lined tank		1. Kindly refer to 'household toilet characteristics' section of the city Census document to help identify the types of on-site sanitation systems connected to different types of toilets in the city. Please note that this information may only be provided in the Census if it classifies on site sanitation systems as per the different toilet types. 2. Kindly refer to the sanitation baseline study conducted by any local or international organizations (urban local body, educational institutes, non-governmental organizations) in the city.						Y	Y						

#	Category	Questions	Options	Hint	Data Collection Protocol	RP	RP	RP	RP	RP	RP	RP	RP	RP	RP	RP				
						1	2	3	4	5	6	7	8	9	10	11				
44	Commercial / Institutional / Industrial	Identify the total number of buildings (commercial, institutional and industrial) located on roads with poor access (width of the road less than 3m) dependent on each of the following on-site sanitation system typology.	-Septic tank - Pit - Fully lined tank		1. Kindly refer to 'household toilet characteristics' section of the city Census document to help identify the types of on-site sanitation systems connected to different types of toilets in the city. Please note that this information may only be provided in the Census if it classifies on site sanitation systems as per the different toilet types. 2. Kindly refer to the sanitation baseline study conducted by any local or international organizations (urban local body, educational institutes, non-governmental organizations) in the city.										Y	Y				
45	Commercial / Institutional / Industrial	On an average, how many people make use of the toilet facility available within buildings located on roads with poor access (width of the road less than 3m) for defecation purpose only? (disaggregated by OSS typology)	-Septic tank - Pit - Fully lined tank		1. Kindly refer to 'household toilet characteristics' section of the city Census document to help identify the types of on-site sanitation systems connected to different types of toilets in the city. Please note that this information may only be provided in the Census if it classifies on site sanitation systems as per the different toilet types. 2. Kindly refer to the sanitation baseline study										Y	Y				

#	Category	Questions	Options	Hint	Data Collection Protocol	RP	RP	RP	RP	RP	RP	RP	RP	RP	RP	RP
						1	2	3	4	5	6	7	8	9	10	11
					conducted by any local or international organizations (urban local body, educational institutes, non-governmental organizations) in the city.											
46	Community Toilets	Identify the total number of community toilets located on roads with poor access (width of the road less than 3m) dependent on each of the following on-site sanitation system typology.	-Septic tank - Pit - Fully lined tank	Community toilets here means a shared facility provided by and for a group of residents or an entire settlement. Community toilet blocks are used primarily in low-income and/or informal settlements and/or slums, where space and/or land is a constraint in providing a household toilet. These are for a fixed user group.	<p>1. Kindly refer to the city website or the city documents (particularly the conservancy and sanitation department documents) to identify the total number of community toilets in the city.</p> <p>2. If the data is not mentioned in the city documents, kindly refer to secondary documents of local and international agencies (public organizations, funding agencies and non-governmental organizations) who work towards providing community toilets in the city.</p> <p>3. You may also refer to the sanitation baseline study conducted by any local or international organizations (urban local body, educational institutes, non-governmental organizations) in the city.</p>									Y	Y	

#	Category	Questions	Options	Hint	Data Collection Protocol	RP	RP	RP	RP	RP	RP	RP	RP	RP	RP				
						1	2	3	4	5	6	7	8	9	10	11			
47	Community Toilets	In total, how many households are dependent on these community toilets located on roads with poor access (width of the road less than 3m)? (disaggregated by OSS typology)	-Septic tank - Pit - Fully lined tank	Community toilets here means a shared facility provided by and for a group of residents or an entire settlement. Community toilet blocks are used primarily in low-income and/or informal settlements and/or slums, where space and/or land is a constraint in providing a household toilet. These are for a fixed user group.	Kindly refer to the city website or the city documents (particularly the conservancy and sanitation department documents) or talk to the city engineer to identify the total number of people using public toilets for defecating purpose only.									Y	Y				
48	Public Toilets	Identify the total number of public toilets located on roads with poor access (width of the road less than 3m) dependent on each of the following on-site sanitation system typology.	-Septic tank - Pit - Fully lined tank	Public toilets here is defined as those that are used by the floating population/general public in places such as markets, train stations, tourist places, near office complexes, or other public areas where there are considerable number of people passing by.	Kindly refer to the city website or the city documents (particularly the conservancy and sanitation department documents) to identify the total number of public toilets in the city.									Y	Y				

#	Category	Questions	Options	Hint	Data Collection Protocol	RP	RP	RP	RP	RP	RP	RP	RP	RP	RP	RP	
						1	2	3	4	5	6	7	8	9	10	11	
49	Public Toilets	On an average, how many people make use of the public toilet facility located on roads with poor access (width of the road less than 3m) for defecation purpose only? (disaggregated by OSS typology)	-Septic tank - Pit - Fully lined tank														
50	Households	Identify the total number of households located on roads with good access (width of the road greater than 3m) dependent on each of the following on-site sanitation system typology?	-Septic tank - Pit - Fully lined tank		Kindly refer to 'household toilet characteristics' section of the city Census document to help identify the types of on-site sanitation systems connected to different types of toilets in the city.							Y	Y				
51	Commercial / Institutional / Industrial	Identify the total number of buildings (commercial, institutional and industrial) located on roads with good access (width of the road greater than 3m) dependent on each of the following on-site sanitation system typology?	-Septic tank - Pit - Fully lined tank		Kindly refer to 'household toilet characteristics' section of the city Census document to help identify the types of on-site sanitation systems connected to different types of toilets in the city.							Y	Y				

#	Category	Questions	Options	Hint	Data Collection Protocol	RP	RP	RP	RP	RP	RP	RP	RP	RP	RP	RP	
						1	2	3	4	5	6	7	8	9	10	11	
52	Commercial / Institutional / Industrial	On an average, how many people make use of the toilet facility located on roads with good access (width of the road greater than 3m) available within these buildings for defecation purpose only? (disaggregated by on-site sanitation system typology)	-Septic tank - Pit - Fully lined tank		Kindly refer to 'household toilet characteristics' section of the city Census document to help identify the types of on-site sanitation systems connected to different types of toilets in the city.									Y	Y		
53	Community Toilets	Identify the total number of community toilets located on roads with good access (width of the road greater than 3m) dependent on each of the following on-site sanitation system typology?	-Septic tank - Pit - Fully lined tank	Community toilets here means a shared facility provided by and for a group of residents or an entire settlement. Community toilet blocks are used primarily in low-income and/or informal settlements and/or slums, where space and/or land is a constraint in providing a household toilet. These are for a fixed user group.	Kindly refer to the city website or the city documents (particularly the conservancy and sanitation department documents) to identify the total number of community toilets in the city.									Y	Y		
54	Community Toilets	In total, how many households are dependent on these community toilets located on roads with good access (width of the road greater than 3m)? (disaggregated by on-site sanitation system typology)	-Septic tank - Pit - Fully lined tank											Y	Y		

#	Category	Questions	Options	Hint	Data Collection Protocol	RP	RP	RP	RP	RP	RP	RP	RP	RP	RP	RP	
						1	2	3	4	5	6	7	8	9	10	11	
55	Public Toilets	Identify the total number of public toilets located on roads with good access (width of the road greater than 3m) dependent on each of the following on-site sanitation system typology?	-Septic tank - Pit - Fully lined tank	Public toilets here is defined as those that are used by the floating population/general public in places such as markets, train stations, tourist places, near office complexes, or other public areas where there are considerable number of people passing by.	Kindly refer to the city website or the city documents (particularly the conservancy and sanitation department documents) to identify the total number of public toilets in the city.												
56	Public Toilets	On an average, how many people make use of the public toilet facility located on roads with good access (width of the road greater than 3m) for defecation purpose only? (disaggregated by on-site sanitation system typology)	-Septic tank - Pit - Fully lined tank		Kindly refer to the city website or the city documents (particularly the conservancy and sanitation department documents) or talk to the city engineer to identify the total number of people using public toilets for defecating purpose only.								Y	Y			
57	Desludging Operators	What is the total number of trips per day made by small desludging vehicles in the city?			Please conduct key informant interviews with desludging operators.								Y	Y			
58	Desludging Operators	What is the average volume of a small desludging vehicles in the city?			Please conduct key informant interviews with desludging operators.								Y	Y			
59	Desludging Operators	What is the total number of small desludging vehicles available in the city?			Please conduct key informant interviews with desludging operators.								Y	Y			

#	Category	Questions	Options	Hint	Data Collection Protocol	RP	RP	RP	RP	RP	RP	RP	RP	RP	RP	RP	
						1	2	3	4	5	6	7	8	9	10	11	
60	Desludging Operators	What is the average desludging frequency of small desludging vehicles in the city? (In years)			Please conduct key informant interviews with desludging operators.								Y	Y			
61	Desludging Operators	What is the total number of trips per day made by Large desludging vehicles in the city?			Please conduct key informant interviews with desludging operators.								Y	Y			
62	Desludging Operators	What is the average volume of large desludging vehicles in the city?			Please conduct key informant interviews with desludging operators.								Y	Y			
63	Desludging Operators	What is the total number of large desludging vehicles available in the city?			Please conduct key informant interviews with desludging operators.								Y	Y			
64	Desludging Operators	What is the average desludging frequency of large desludging vehicles in the city?			Please conduct key informant interviews with desludging operators.								Y	Y			
65	Assumptions	Percentage of water content required in the onsite sanitation systems to desludge the faecal sludge generated from the system?			Please consult with the desludging operators to understand the water content concentration required for effective desludging of faecal sludge in the city.								Y	Y			

